

Injury attendances to Royal Albert Edward Infirmary Emergency Department

October 2010 to September 2011

This report summarises recorded injury attendances to Royal Albert Edward Infirmary Emergency Department (ED) between October 2010 and September 2011.

From October 2010 to September 2011 there were 35,045 injury attendances to Royal Albert Edward Infirmary ED. Males accounted for over half (56%) of all attendances. The month with the highest attendances for injury was May (n=3,265) with January (n=2,526) having the lowest attendances (**Figure 1**). The majority (92%) of attendances were recorded as other accident. Assaults accounted for 4% of all injury attendances, road traffic collisions (RTC) 3% and deliberate self-harm (DSH) 2% (**Table 1**).

For all injuries, the highest proportions of attendances were for persons aged 5 to 19 years (27%) or 20 to 34 years (23%) (**Figure 2**). Over four in ten (41%) DSH attendees were aged 20 to 34 years (**Figure 3**).

Table 2 shows the location of the incident of injury attendances. Almost half (48%) of injuries occurred in the home, 8% occurred in a public place or at work whilst 5% occurred at an educational establishment.

Table 3 shows the ethnicity of injury attendees to Royal Albert Edward Infirmary ED. Over nine in ten (96%) were recorded as white.

The disposal of a patient can give an indication of the severity of the injuries sustained. Over half (56%) were discharged, nearly four in ten (39%) were referred and 4% were admitted (**Table 4**). Over four in five (85%) RTC attendees were discharged. Four in five (40%) assault attendees and 42% of DSH attendees had a referral/follow-up (**Table 5**).

Table 6 shows the arrival methods of injury attendances at Royal Albert Edward Infirmary ED. Around one in seven (14%) arrived by ambulance.

Table 7 shows assault attendances to Royal Albert Edward Infirmary ED. Over seven in ten (71%) of assault attendees were male, and over three in ten (31%) occurred in a public place (**Figure 3**). A third (33%) of assault attendees arrived at the ED by ambulance, and over a quarter (27%) of assault attendances occurred at weekend nights.

Figure 1: Royal Albert Edward Infirmary ED: Total injury attendances by gender and month, October 2010 to September 2011

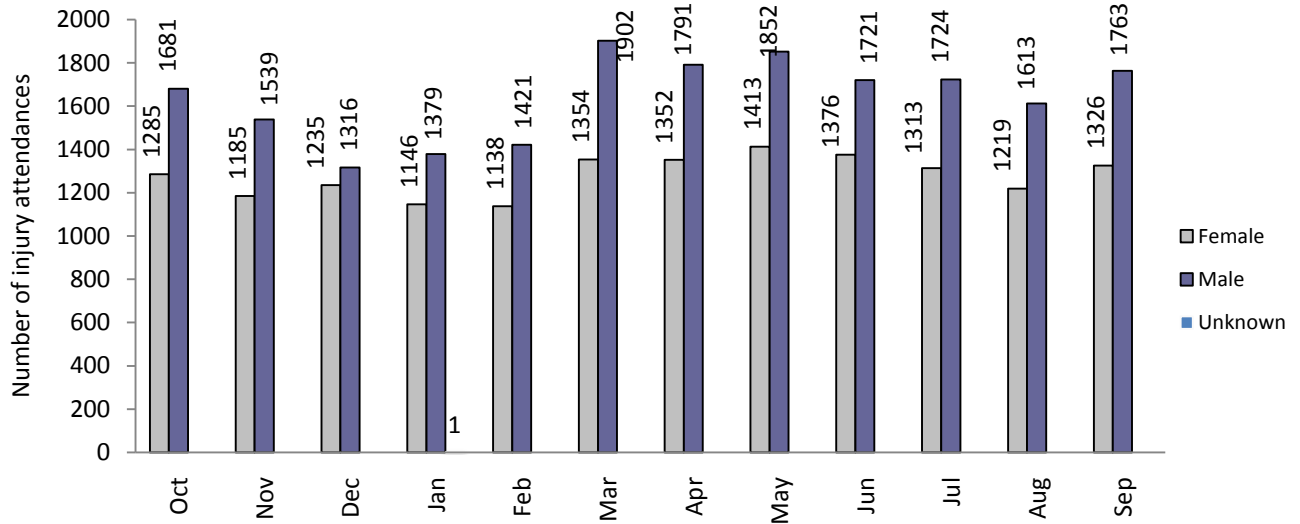


Table 1: Royal Albert Edward Infirmary ED: Total injury attendances by injury group and month, October 2010 to September 2011*

Injury group	Oct	Nov	Dec	Jan	Feb	Mar	Apr	May	Jun	Jul	Aug	Sep	Total	%
Other accident	2703	2484	2310	2307	2335	3029	2906	3017	2885	2846	2603	2865	32290	92
Assault	118	83	115	98	102	117	117	126	101	86	92	118	1273	4
RTC	83	101	88	71	80	61	71	75	64	56	90	51	891	3
DSH	62	56	38	50	42	49	49	47	47	49	47	55	591	2
Total	2966	2724	2551	2526	2559	3256	3143	3265	3097	3037	2832	3089	35045	100

*Percentages may not add to 100 due to rounding.

Figure 2: Royal Albert Edward Infirmary ED: Total injury attendances by age group and month, October 2010 to September 2011

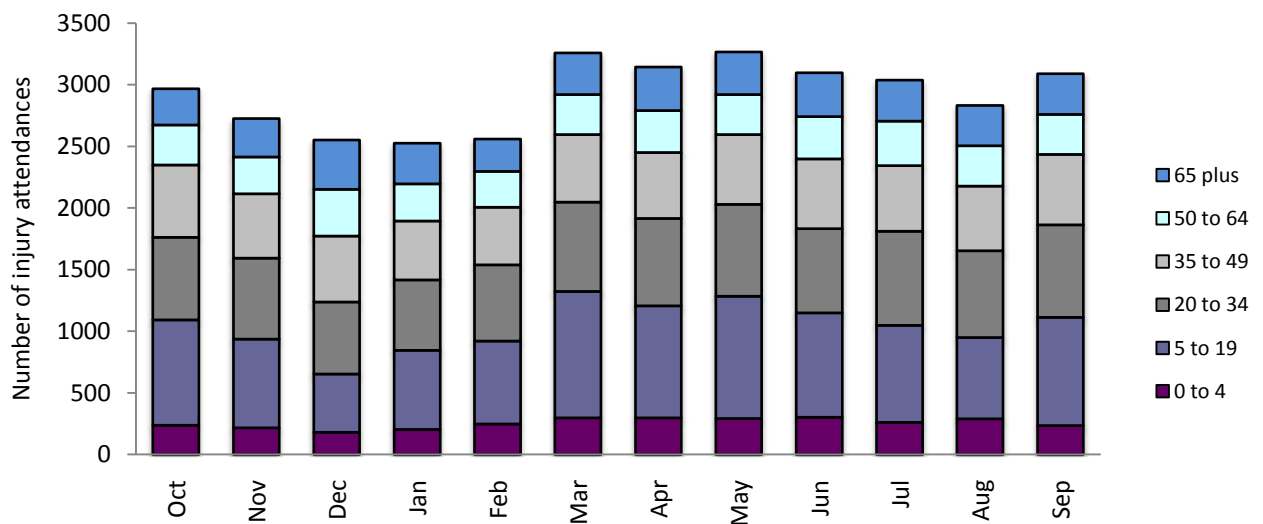


Figure 3: Royal Albert Edward Infirmary ED: Total injury attendances by age group and injury group (excluding other accident), October 2010 to September 2011

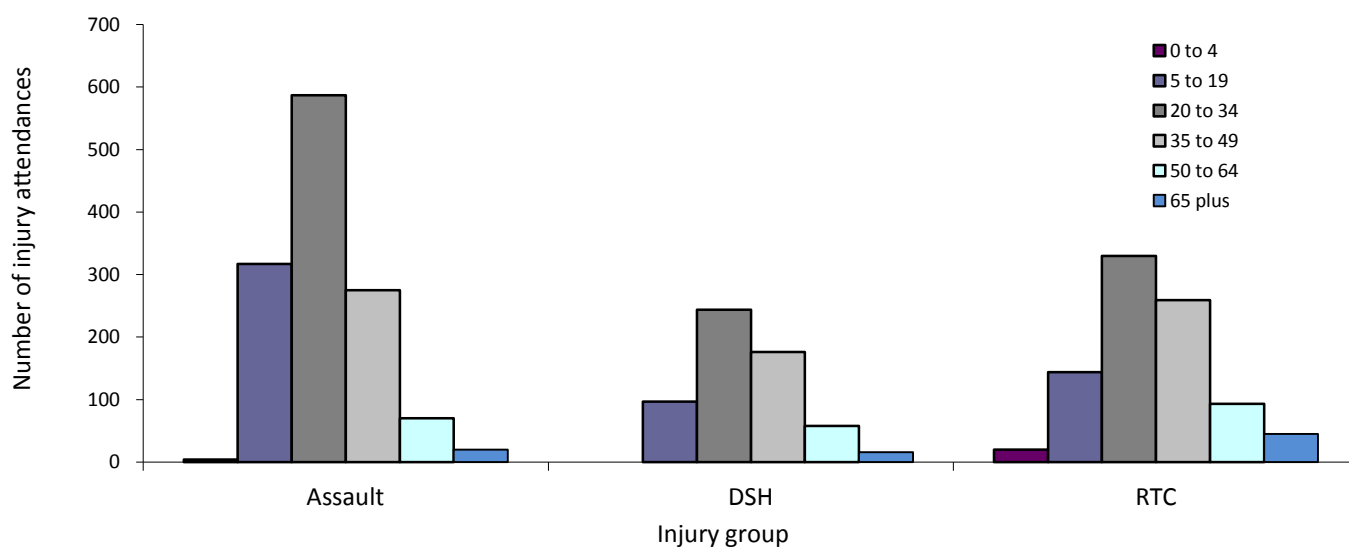


Table 2: Royal Albert Edward Infirmary ED: Total injury attendances by location of incident and month, October 2010 to September 2011^{1*}

Location	Oct	Nov	Dec	Jan	Feb	Mar	Apr	May	Jun	Jul	Aug	Sep	Total	%
Home	1400	1322	1246	1274	1243	1489	1644	1556	1458	1466	1362	1409	16869	48
Other	960	843	768	787	774	1059	1066	1109	968	850	832	955	10971	31
Public place	222	140	260	163	180	206	176	210	267	385	398	308	2915	8
Work	221	237	175	163	193	209	165	198	237	231	230	264	2523	7
Education establishments	163	182	102	139	169	293	92	192	167	105	10	153	1767	5
Total	2966	2724	2551	2526	2559	3256	3143	3265	3097	3037	2832	3089	35045	100

*Percentages may not add to 100 due to rounding.

Table 3: Royal Albert Edward Infirmary ED: Total injury attendances by ethnicity and month, October 2010 to September 2011^{2*}

Ethnicity	Oct	Nov	Dec	Jan	Feb	Mar	Apr	May	Jun	Jul	Aug	Sep	Total	%
White	2841	2617	2462	2424	2479	3119	3019	3106	2960	2899	2706	2958	33590	96
Not stated	60	45	32	42	41	61	43	64	48	49	31	46	562	2
Not recorded	34	39	35	27	22	37	48	65	50	54	68	55	534	2
Black	***	5	***	***	***	10	15	7	12	16	***	10	89	0
Mixed	***	6	5	10	6	***	12	8	9	7	10	***	85	0
Chinese	6	5	***	***	***	6	***	***	6	***	6	***	48	0
Indian	5	***	***	7	***	5	***	***	8	***	***	6	47	0
Asian other	***	***	***	***	***	5	***	***	***	***	6	6	38	0
Bangladeshi	5	***	***	6	***	7	***	***	***	***	***	***	27	0
Pakistani	***	***	***	***	***	***	***	***	***	***	***	***	15	0
Any other ethnic group	***	***	***	***	***	***	***	***	***	***	***	***	10	0
Total	2966	2724	2551	2526	2559	3256	3143	3265	3097	3037	2832	3089	35045	100

*Percentages may not add up to 100 due to rounding.

¹ Please note that all numbers less than five have been suppressed in line with patient confidentiality and if there is only one number <5 in a category then two numbers will be suppressed at the next level.

² White=Irish, British, other white background; Mixed=white and black, white and Asian, mixed any other; Black=African, Caribbean, other black.

Table 4: Royal Albert Edward Infirmary ED: Total injury attendances by method of disposal and month, October 2010 to September 2011³

Disposal	Oct	Nov	Dec	Jan	Feb	Mar	Apr	May	Jun	Jul	Aug	Sep	Total	%
Discharged	1608	1407	1325	1346	1483	1908	1802	1908	1853	1653	1573	1721	19587	56
Referral/follow-up	1236	1210	1107	1086	990	1237	1151	1171	1102	1227	1089	1186	13792	39
Admitted	113	101	***	87	***	105	134	147	125	133	139	131	1416	4
Other	9	6	***	7	***	6	56	39	17	24	31	51	250	1
Total	2966	2724	2551	2526	2559	3256	3143	3265	3097	3037	2832	3089	35045	100

Table 5: Royal Albert Edward Infirmary ED: Total injury attendances by method of disposal and injury group, October 2010 to September 2011

Disposal	Assault		DSH		Other accident		RTC		Total	
	n	%	n	%	n	%	n	%	n	%
Discharged	698	55	235	40	17901	55	753	85	19587	56
Referral/follow-up	515	40	247	42	12910	40	120	13	13792	39
Admitted	***	***	60	10	1308	4	***	***	1416	4
Other	***	***	49	8	171	1	***	***	250	1
Total	1273	100	591	100	32290	100	891	100	35045	100

*Percentages may not add up to 100 due to rounding.

Table 7: Royal Albert Edward Infirmary ED: Total injury attendances by mode of arrival and month, October 2010 to September 2011

Arrival mode	Oct	Nov	Dec	Jan	Feb	Mar	Apr	May	Jun	Jul	Aug	Sep	Total	%
Other	2532	2326	2074	2119	2245	2861	2724	2810	2685	2608	2451	2666	30101	86
Ambulance	434	398	477	407	314	395	419	455	412	429	381	423	4944	14
Total	2966	2724	2551	2526	2559	3256	3143	3265	3097	3037	2832	3089	35045	100

Table 6: Royal Albert Edward Infirmary ED: Total assault and injury attendances by gender, mode of arrival, incident location and time of attendance, October 2010 to September 2011

Injury type	Assault attendees		All injuries % (n=35,045)
	n	%	
Gender			
Female	369	29	44
Male	904	71	56
Mode			
Ambulance	426	33	14
Other	847	67	86
Location			
Other	447	35	31
Public place	391	31	8
Home	360	28	48
Work	42	3	7
Educational establishment	33	3	5
Day & time			
Weekend nights*	309	24	9
Weekend days	299	23	22
Weekdays	665	52	70

*8pm to 3.59am, Friday night/Saturday morning, Saturday night/Sunday morning, Sunday night/Monday morning

Author: Ian Warren, Published: November 2011

For further information please contact: Centre for Public Health, Research Directorate, Liverpool John Moores University, 2nd Floor, Henry Cotton Building, 15-21 Webster Street, Liverpool, L3 2ET, Tel: 0151 231 4513 or Email: i.j.warren@ljmu.ac.uk .Website: www.tiig.info

³ Admitted=admitted to hospital bed; Discharged=discharged - did not require any follow up treatment; Referral/follow-up=discharged - follow up treatment to be provided by GP, referred to ED clinic, referred to fracture clinic, referred to other out-patient clinic, transferred to other health care provider; Other=died in department, left department before being treated, left department having refused treatment.